

SPIN 15 A

Continuous cycle mixer for premixed products

Spin 15 A 230V / 50Hz - 1.85 kW
1106102

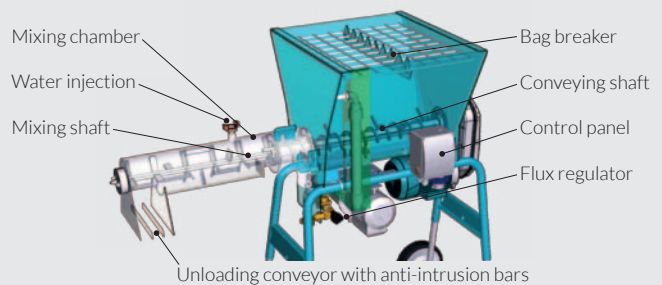


Exclusive I-DUST Dust Grate
It significantly reduces the dust caused by opening the bags (optional).



Professional components:

- Self-priming electropump in stainless steel
- Water flow descaling regulator
- Quick acting solenoid valve
- Double water filtering system
- Drainable antifreeze system



Description

Simple to use continuous cycle mixer for premixed products. It is lightweight for handling and easy to clean at the end of the day.

Equipped with an exclusive parallel-axis gearmotor and electronic starter, it is ideal for quickly mixing most dry premixed products with water. Easily adjust the loading / unloading height to allow for a minimal effort for loading.

The exclusive I-DUST Dust Grate (optional), when connected to a vacuum cleaner, considerably reduces the dust created when loading the material while keeping the work environment clean.

It is suitable for mixing premixed products:

- Premixed cement screed (also with fibers)
- Lightened screed pre-dosed with expanded clay with grain size <16 mm
- Lightened premixed screed with polystyrene
- Cement based plasters
- Lime based plasters
- Structural plasters with microfibers
- Restorative plasters
- Binders / mortars for injections
- Insulating plasters based on polystyrene or cork
- Mortars for reinforcement
- Mortars for bedding
- Filling shotcrete with grain size <8 mm
- Self-levelling cement based screeds
- Self-levelling anhydride based screeds
- Thermal insulating screeds based on cork or polystyrene
- Glues for coatings
- Mortars for fire protection

In combination with a plastering pump it can form a mixing and pumping unit.

Operation

The machine must be connected to the electrical and hydraulic network with the appropriate pipe supplied. If a hydraulic connection with adequate pressure (2 bar) is not available, water can be drawn directly from a raised container. The standard pump will be able to self-power the Spin 15 A.

The bag of the premixed product is broken in the bag breaker grid above the hopper and the product is poured inside.

At this point, once the machine is turned on using the switch on the electrical panel, the material will begin to exit from the discharge conveyor. It is possible to adjust the quantity of mixing water at will, by acting on the micrometric flow regulator, until the desired product consistency is obtained.

At the end of the working day, after turning off the machine, it is enough to remove the mixing chamber only, leaving the dry material inside the hopper.

The mixing chamber is easily transportable to any place where it can be washed. When washing is complete, the Spin 15 A is ready for a new use.

Spin 15 A is equipped with CE-compliant safety systems:

- Mixing chamber safety sensor
- Anti-intrusion bars in the discharge conveyor (hand protection)
- Anti-loss bolt for the hopper grid
- IP 55 switch with release coil

It is also equipped with a double electrical protection system for the electric motors:

- Manual thermal reset circuit breaker
- Self-resetting motor thermal protector



only 85 kg
The lightest in its category



Height adjustable in 3 positions



H load: 950 mm
H discharge: 455 mm



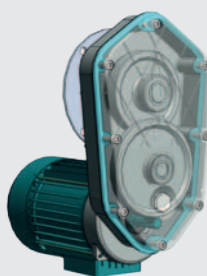
H load: 1095 mm
H discharge: 600 mm



H load: 1165 mm
H discharge: 670 mm



Automatic electric lock safety sensor in case of disassembly of the mixing chamber.



The specific patented IMER gearmotor with parallel axes allows to transfer the power of the motor with the minimum waste of driving force. The particular configuration with the motor turned under the hopper reduces the overall dimensions and allows the motor to always remain protected from direct cement powder jets.

Standard Equipment

- Single-phase gear cascade gearmotor 230V / 50Hz
- Self-resetting motor thermal protector
- Electric control panel with on / off switch
- Thermal circuit breaker (motor protection) with manual reset
- Hopper with grate and bag breaker
- Removable mixing chamber
- Mixing shaft with Ardox steel paddles
- Water system with micrometric flow regulator
- Self-priming electropump in stainless steel
- 10 m water hose with quick couplings and 3/4" F quick connection
- Cardboard packaging



Technical data

Hopper capacity	l	60
Mixing performance*	l/min	17
Mixer revolutions	rpm	280
Motor power	kW	1.4
Standard electropump	kW	0.45
LpA operator position	dB(A)	<65
Weight (with packaging)	kg	85 (89)
Dimensions (width / length / h)	mm	701/1380/1165-950 (max-min)
Packaging dimensions (width / length / h)	mm	800/590/830

(* The data relating to the hourly mixing performance are non-binding indicative values, which may vary according to the consistency of the materials.

Accessories

- 1107004**  Glues mixing kit for Spin 15 A
It reduces the mixing performance of the machine to 8 l / min and increases the mixing time by 45%.
➔ Recommended for:

 - Glues for thermal insulation coatings
 - Binders / mortars for injections
- 1107601**  Flow meter kit for Spin 15 A
➔ Recommended for checking the amount of water to put in the mixture
- 1107629**  I-DUST Dust Grate for Spin 15 A

