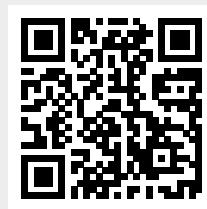




Get to the IMERVIEW portal:



IMER International S.p.A.
Building Equipment Division
Via della Meccanica, 39
(Zona Industriale Sentino)
53040 Rapolano Terme (Siena) - Italy
Tel. +39 0577 97341

imergroup.com



**ONE SOFTWARE,
INFINITE SOLUTIONS.**

ONE SOFTWARE, INFINITE SOLUTIONS.

IMER Group has developed **IMERVIEW** with the aim of making it possible to control various aspects of the machines remotely, with a view to provide a leading service that is close to the customer.

IMERVIEW is a kit which can be combined with the machines of the **ACCESS, EQUIPMENT** and **CONCRETE** Divisions.



Every **IMER Equipment** rental company or customer can manage all the machines in their **fleet** through the main **dashboard**, where there is a summary of some basic information of all the fleet machines.

Each **individual machine** also has its own **specific dashboard**, which enables the user to view **information** and **data** coming from the device through a clear and user friendly interface.

The user can monitor various machine parameters in **real time** (e.g. cycle times, lock / unlock functions, engine rpm, hours of **use** and **operation** of the machine, **geolocation** and various indications coming from the machine's on-board **sensors**). The user can also obtain reports with **graphs** that allow **analysing** the trend of a specific parameter detected by the machine's control unit.

Moreover, it is possible to set various parameters for the **management** and **use** of the machine (e.g. delimitation of the working area).

The **reporting** of accounting information (useful, for example, for billing) completes the functions of this innovative and powerful system.



FEATURES AND BENEFITS OF THE SYSTEM

**SIMULTANEOUS
REMOTE CONTROL OF
THE MACHINES AND
FLEET MANAGEMENT**



**MACHINE
PARAMETERS
SETTING**



**INTERACTION
WITH IOM DEVICES
AND SYSTEMS**



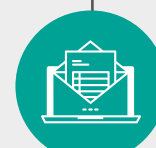
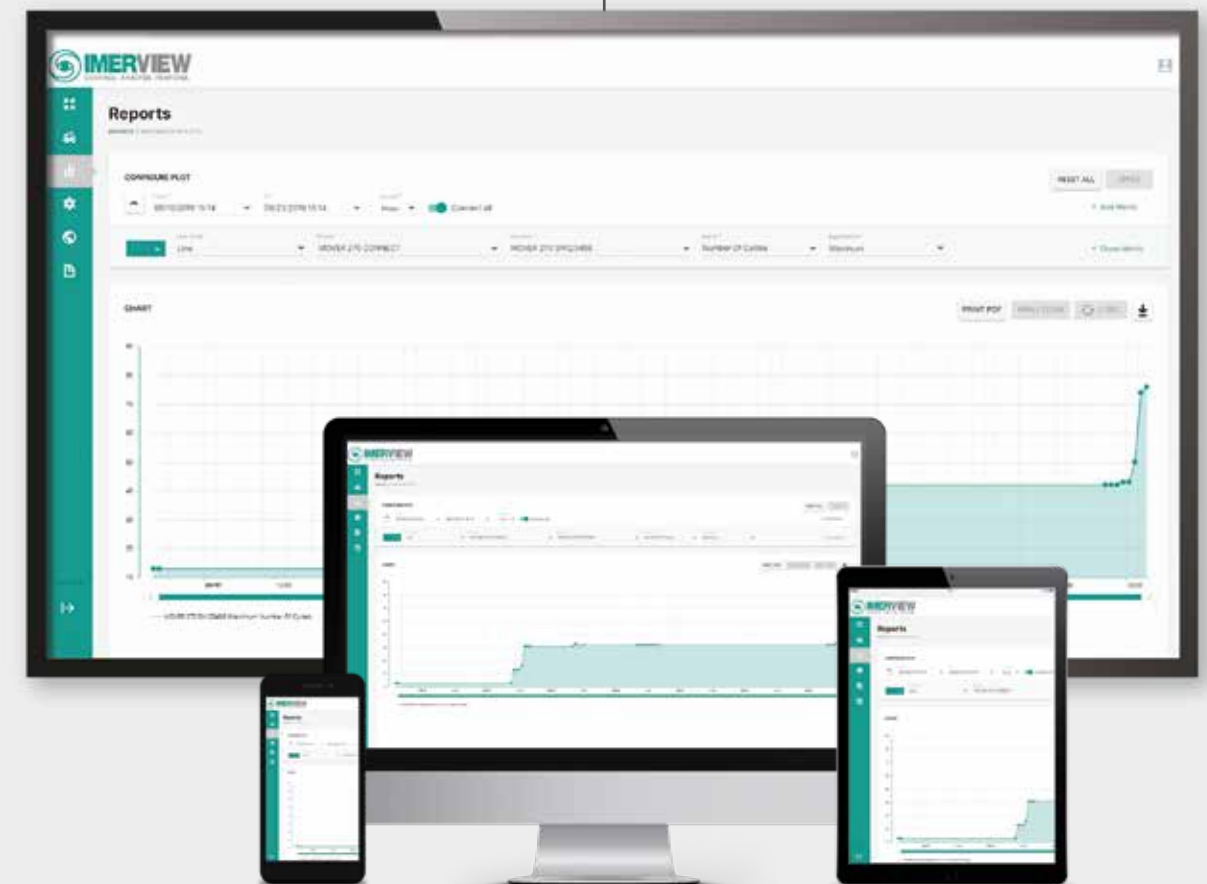
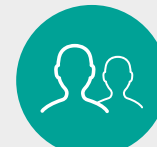
**SCHEDULED
MAINTENANCE**



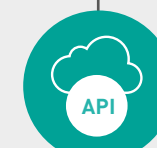
**REAL-TIME DISPLAY
OF MACHINE
PARAMETERS**



**MACHINE PROBLEMS'
DIAGNOSIS BY THE
OPERATOR**



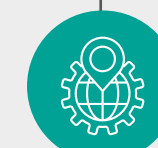
**REPORTS FOR
ACCOUNTING
INFORMATION**



**APPLICATION
PROGRAMMING
INTERFACE**



**MACHINE
PARAMETERS
CHECK**



**MACHINE
GEOLOCATION
AND TRACKING**



**GEO FENCING
DELIMITATION
OF MACHINE
WORKING AREA**