



BTK 1500P





RADIUS LIFT ARM

*BTK 1500P RADIUS LIFT ARM BATCHING PLANT
ONE OR TWO RADIUS LIFT ARM, ONE OR TWO CEMENT
WEIGHING SYSTEMS, 500 L. CLS PER CYCLE*

BTK 1500P



- COMPACT AND VERSATILE
- MAXIMUM CONCRETE QUALITY
- IDEAL FOR SMALL SMALL PRECAST FACTORY EVEN IN URBAN CENTERS
- LESS CO₂, TRAFFIC AND EMISSIONS
- SINGLE OPERATOR

BTK 1500P

BTK radius lift arm batching plant are compact, versatile and with low environmental impact, they are suitable for small precast factory even located in urban center where emissions, truck handling and energy consumption must be reduced to a minimum level. Only one operator is needed to manage it.



DISTINCTIVE FEATURES

- ELECTRONIC WEIGHING SYSTEM FOR CERTIFIED CONCRETE
- HYDRAULIC OPERATION
- AUTOMATIC TRANSLATING BUCKET HOLDER BASKET
- SELF-COMPENSATION OF WATER
- MANAGEMENT UNIT WITH THE POSSIBILITY OF DATA TRANSMISSION AND REMOTE ASSISTANCE
- GREAT AUTONOMY THANKS TO THE GREAT STORAGE ON THE GROUND; BETTER MANAGEMENT OF SUPPLY
- MAXIMUM FLEXIBILITY: PRODUCT WHEN AND HOW MUCH YOU WANT. ZERO WASTE!



TECHNICAL CHARACTERISTICS

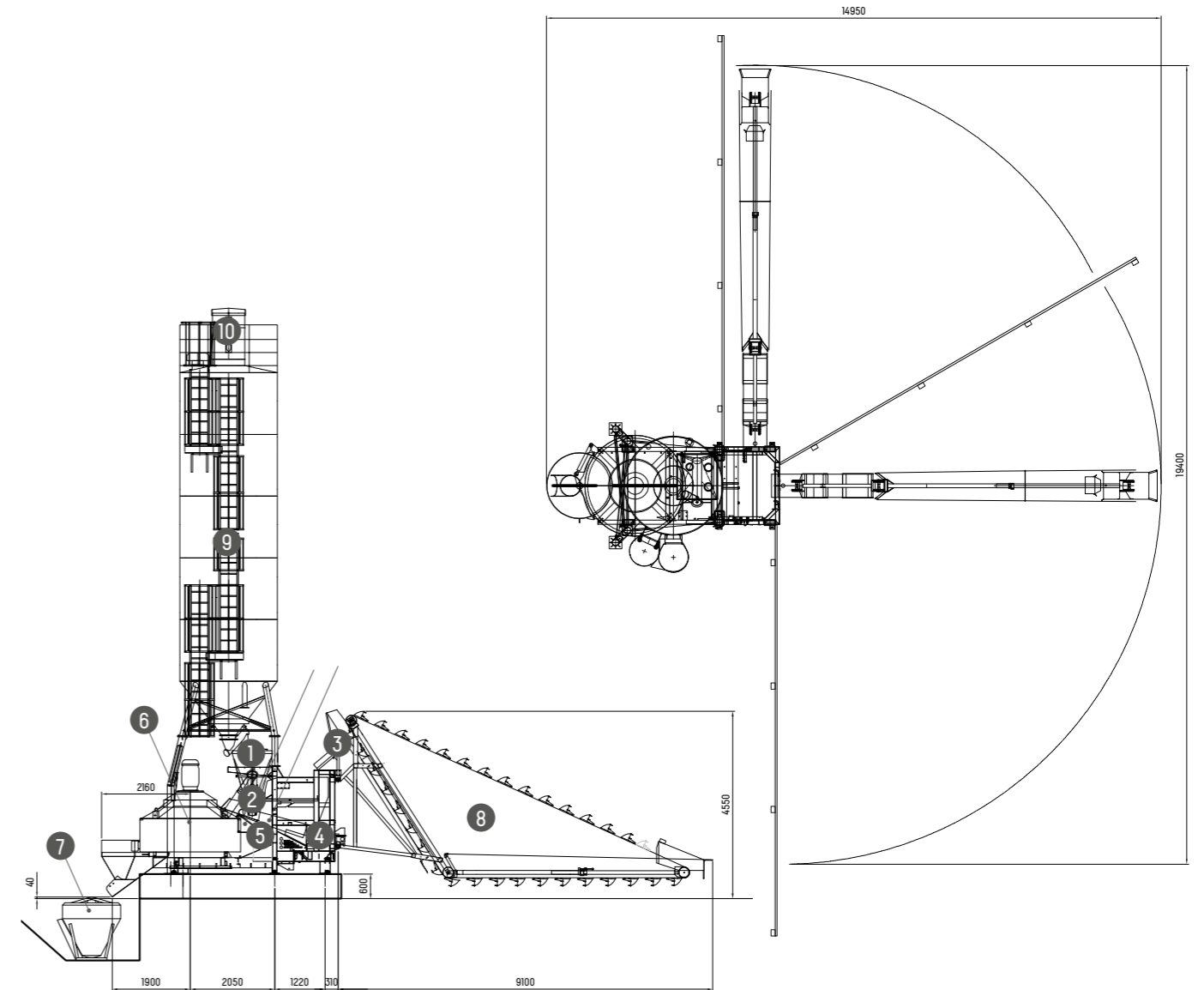
		BTK 1500P
Drum mixer capacity	l	1500
Output of fresh concrete per batch	l	1450
Output of compacted concrete per batch	l	1000
Maximum aggregate stockpile	m ³	300
Maximum absorbed power	kW	56
Monoblock length	mm	7100
Pedestal weight	kg	6700

ACCESSORIES

- BUCKET FOR TRANSLATING BASKET
- AGGREGATE HUMIDITY PROBE
- TIMED ADDITIVE SYSTEM

LAYOUT

BTK 1500P



1_CEMENT WEIGHING HOPPER

2_CEMENT AND AGGREGATE WEIGHING SYSTEM WITH APPROVED LOAD CELLS

3_HOPPER FOR AGGREGATE DOSAGE

4_AGGREGATE CONVEYOR BELT

5_AUTOMATIC WATER UNIT

6_PLANETARY PAN MIXER

7_SKIP GUIDE

8_BIDIRECTIONAL RADIUS LIFT ARM

9_CEMENT SILO WITH LADDER, SAFETY VALVE AND MOTOR VALVE FOR CEMENT EXTRACTION

10_CEMENT DUST REMOVER FILTER

PRODUCTION DIAGRAMS

BATCHING PLANT WITH TWO WEIGHING HOPPERS

	BTK 1500P-TN	BTK 1500P-TR
A Cement weighing	50"	50"
B Aggregate weighing	90"	80"
C Advance water	36"	36"
D Transferring of materials	90"	80"
Phases that define the cycle	B+C+D	B+C+D
Average time per cycle	126"	116"
Hourly output	27-29 m ³ /h	30-32 m ³ /h

A Cement weighing	A1	A2	A3
B Aggregate weighing	B1	B2	B2
C Advance water	C1	C2	
D Transferring of materials	D1	D2	

Notes: A1= first cycle; A2, A3, ...= following cycles

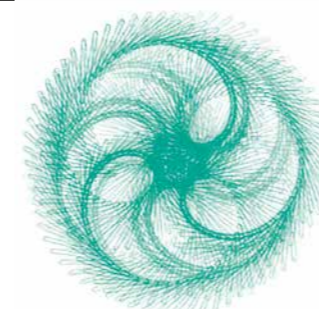
PLUG AND PLAY SYSTEM FOR A QUICK AND SIMPLE INSTALLATION



PLANETARY PAN MIXER ORU MS 1500/1000



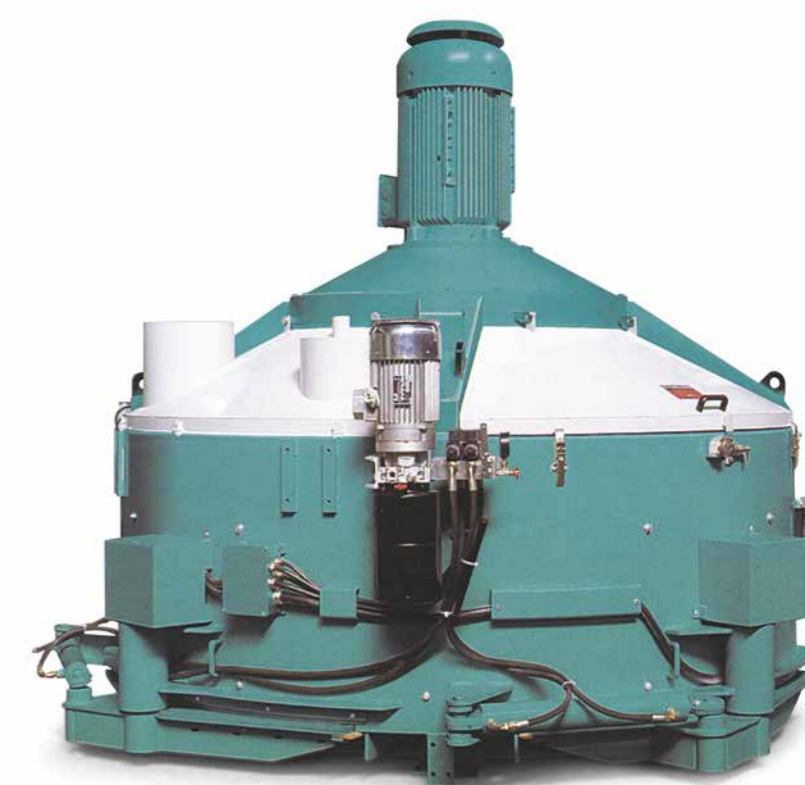
Reversible mixer blades



Planetary mixing forced regime



Oil bath planetary gear motor with hydro-dynamic joint



MIXERS TECHNICAL DATA

		1500/1000
Load capacity	l	1500
Load capacity	Kg	2400
Soft yield	l	1450
Vibrated yield	l/Kg	1000
Mixing and discharge time	sec.	45
Stars and blades	n.	2x2
Scraper blades	n.	1
Tangent blades	n.	1
Differential case	r.p.m.	12.4
Star	r.p.m.	42
Mixing power	kW	45
Oil hydraulic unit power	KW	3
Weight	Kg	3800

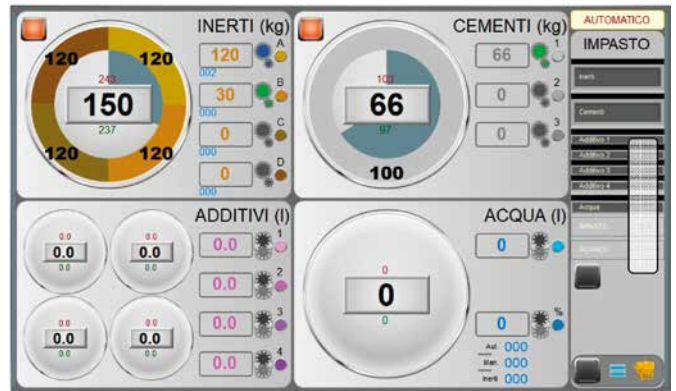
MAIN OPTIONAL ACCESSORIES

- 600÷650 HB WEAR-PROOF STEEL INTERNAL LININGS
- 600÷650 HB WEAR-PROOF STEEL BLADES
- AUTOMATIC HIGH PRESSURE CLEANING SYSTEM
- CONFIGURATIONS FOR EXTREME WEATHER CONDITIONS

EPS 2100-BEW MANAGEMENT AND CONTROL SYSTEMS

EPS 2100-BEW

- **Automation by PLC**
- **IMER management software**
- **Keyboard with display** for setting recipes and process parameters, for viewing consumption and storing production data
- **Option with printer:** allows production data to be printed at the end of the cycle
- **Email sending option:** allows automatic sending of production data at the end of the cycle
- **USB option:** allows the download of stored production data



RIT. START DOSAGGI			
Acqua 2	<input type="checkbox"/>	Additivo 1	0 s
Inerti	0 s	Additivo 2	0 s
Cementi	5 s	Additivo 3	0 s
Acqua	5 s	Additivo 4	0 s
Vib. bilancia		IMPASTO	10 s
		Stop nastro	27 s
Lavoro	0.2 s	Vuotamento	10 s
Pausa	0.2 s	Stop mixer	78 s
Start	0.5 s	Vuota RART	8 s

